



Source: Aerial Map obtained from NYS High Resolution Digital Orthoimagery Program - Suffolk County dated 2001

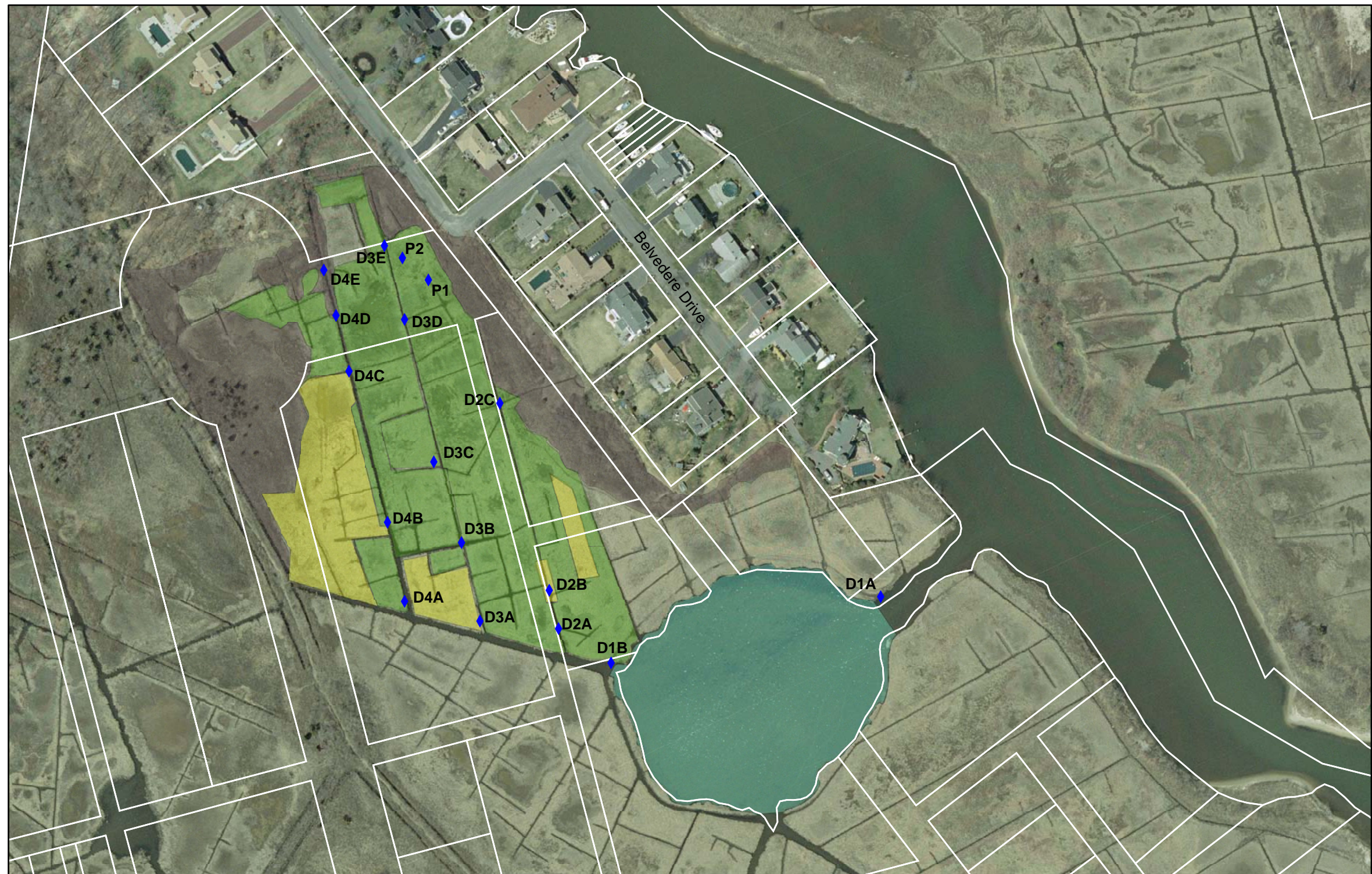
Prepared for:
 Suffolk County
 Department of Public Works

Prepared by:
 Cashin Associates, P.C.
 Cameron Engineering & Associates, LLP

Legend		0 25 50 100 Meters	
■ Tidal Inundation Stake	D Ditch Label with Number	⊕ Culvert Pipe	■ Phragmites australis
S Stake Label with Number	P Pond Label with Number	■ High Marsh	■ Upland
◆ Sampling Station	D Cross Ditch Label with Letter	■ Low Marsh	□ Suffolk County Tax Map

Suffolk County Vector Control &
 Wetlands Management Long-Term Plan
 and Environmental Impact Statement

Task 7 - Priority Study Areas
 Pickman-Remmer Wetland
 Oakdale, New York
 May, 2005



Source: Aerial Map obtained from NYS High Resolution Digital Orthoimagery Program - Suffolk County dated 2001

Prepared for:
 Suffolk County
 Department of Public Works

Prepared by:
 Cashin Associates, P.C.
 Cameron Engineering & Associates, LLP

Legend					
■	Tidal Inundation Stake	D	Ditch Label with Number	■	High Marsh
S	Stake Label with Number	P	Pond Label with Number	■	Low Marsh
◆	Sampling Station	D	Cross Ditch Label with Letter	■	Phragmites
				■	Pond
				■	Suffolk County Tax Map

Suffolk County Vector Control &
 Wetlands Management Long-Term Plan
 and Environmental Impact Statement

Task 7 - Priority Study Areas
 Pepperidge Hall Wetland
 Oakdale, New York
 May, 2005



Source: Aerial Map obtained from NYS High Resolution Digital Orthoimagery Program - Suffolk County dated 2001

Prepared for:
Suffolk County
Department of Public Works

Prepared by:
Cashin Associates, P.C.
Cameron Engineering & Associates, LLP

Legend



- | | | | | |
|---|-------------------------|------------|-------------------------------|------------------------|
| " | Tidal Inundation Stakes | High Marsh | Mix High/Low Marsh | Panne |
| X | Sampling Station | Low Marsh | Phragmites australis | Pond |
| S | Stake Label with Number | D | Cross Ditch Label with Number | Suffolk County Tax Map |
| D | Ditch Label with Number | | | |

Suffolk County Vector Control &
Wetlands Management Long-Term Plan
and Environmental Impact Statement

Task 7 - Priority Study Areas
Namkee Creek Wetland
Bayport, New York
March 2005



Source: Aerial Map obtained from NYS High Resolution Digital Orthoimagery Program - Suffolk County dated 2001

Prepared for:
Suffolk County
Department of Public Works

Prepared by:
Cashin Associates, P.C.
Cameron Engineering & Associates, LLP

Legend

■ Tidal Inundation Stake	D Ditch Label with Number	■ Low Marsh	■ Pond
S Stake Label with Number	P Pond Label with Number	■ Upland	■ Suffolk County Tax Map
◆ Sampling Station	D Cross Ditch Label with Letter	■ Phragmites australis	
	■ High Marsh	■ Salt Panne	



Suffolk County Vector Control &
Wetlands Management Long-Term Plan
and Environmental Impact Statement

Task 7 - Priority Study Areas
Long Beach Bay Wetland
Orient Point, New York
May, 2005